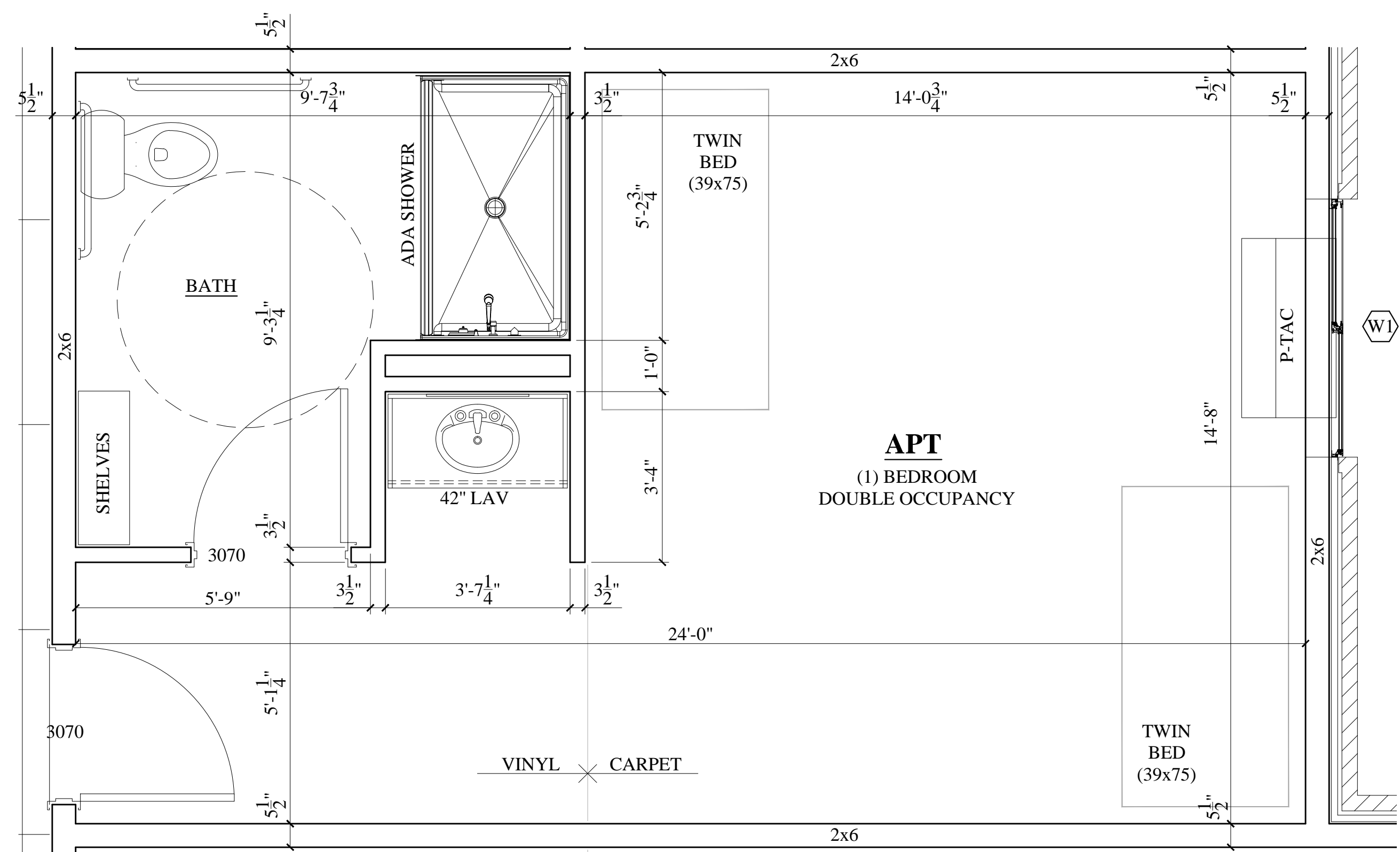


DO NOT SCALE

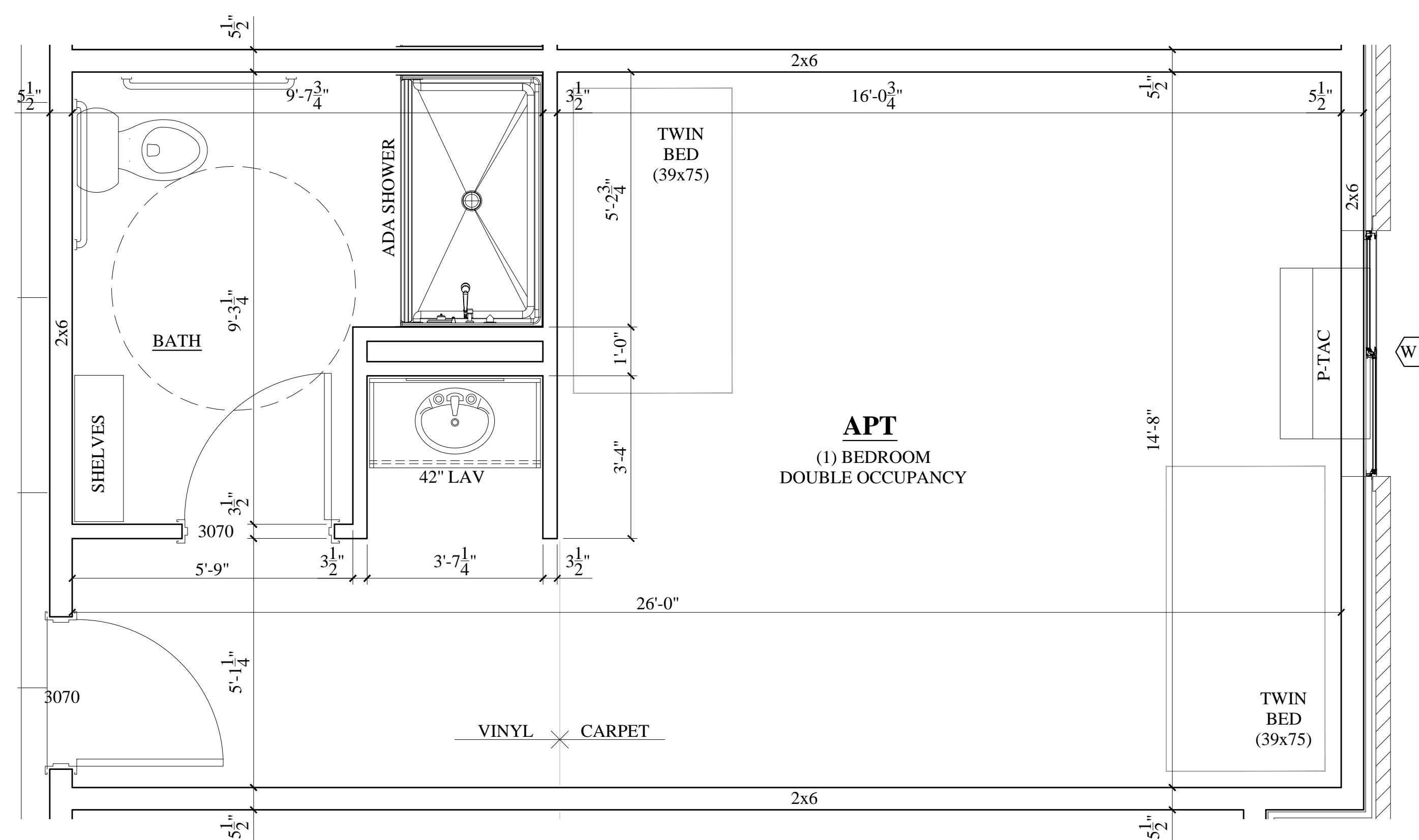
WORK TO DIMENSIONS

IF IN DOUBT - ASK



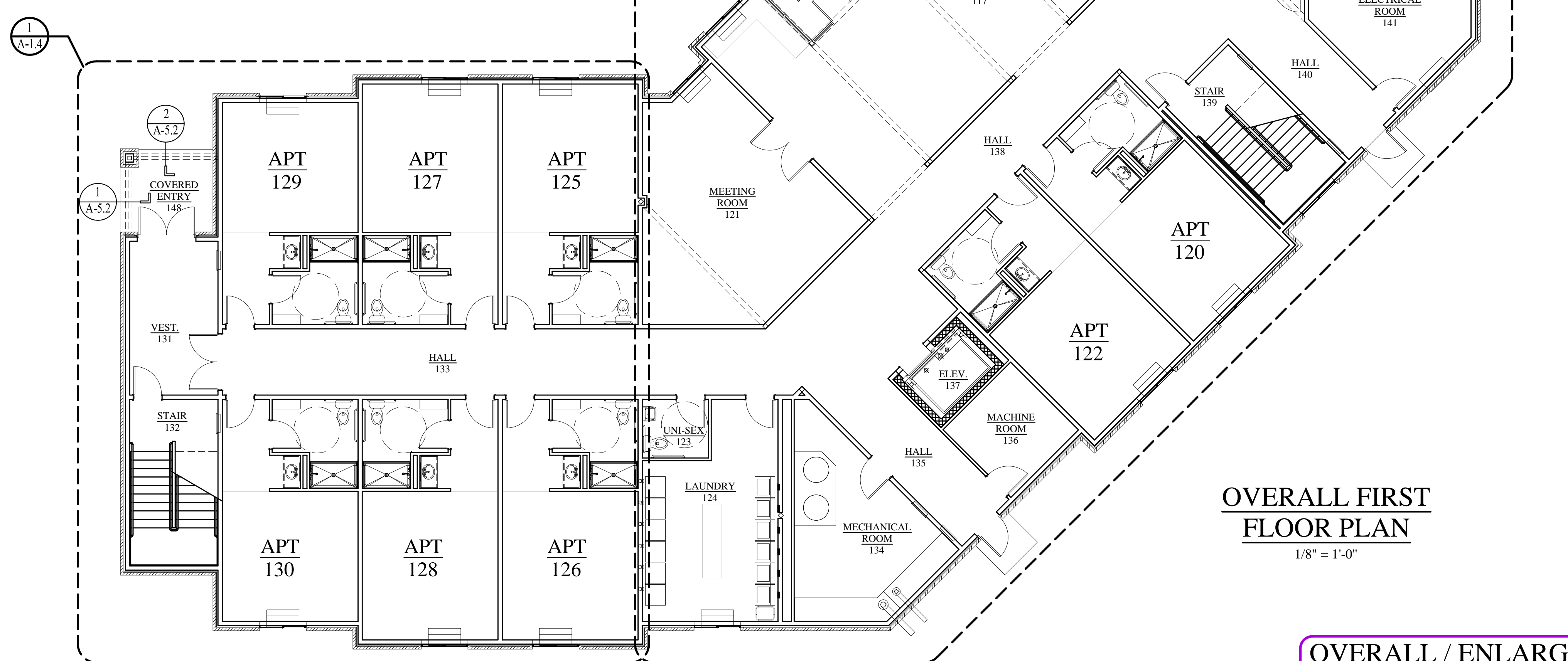
ENLARGED FIRST FLOOR PLAN #1

1/2" = 1'-0"



ENLARGED FIRST FLOOR PLAN #2

1/2" = 1'-0"

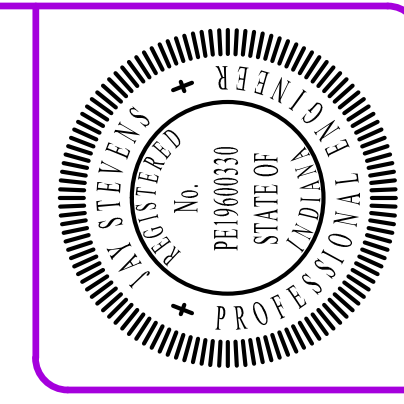


OVERALL FIRST FLOOR PLAN

1/8" = 1'-0"

OVERALL / ENLARGED FIRST FLOOR PLANS

SEE DRAWING



Jim Ingledue
 Registered Professional Engineer
 No. 12547
 State of Indiana
 February 12, 2015

REVISION	BY
2/12/15 REVISIONS	JFM

CONFIDENTIAL INFORMATION
 This drawing and design are confidential and are the property of Industrial Contracting & Engineering. This drawing may not be reproduced, in whole or in part, or introduced to others without the written consent of Industrial Contracting & Engineering.

Construction Manager:
JICI Jim Ingledue
 Construction, Inc.
 PH: 260-665-9384 FAX: 260-665-6702 www.jici.com

Engineer / Designer:



INDUSTRIAL CONTRACTING & ENGINEERING
 "Guaranteed Performance"
 PH: 260-665-2123 FAX: 260-665-9623
 www.industrialcontracting.com

Reiners Hall
 817 Thunder Drive
 Angola, Indiana 46703

TRINE
 UNIVERSITY

DRAWN	JFM
CHECKED	RLB
DATE	12/18/14
SCALE	SEE DRAWING
JOB No.	TRH-013-15
	SHEET

A-1.0

ALL BUILDING CONSTRUCTION WORK SHALL COMPLY WITH THE STATE BUILDING CODES AND REGULATIONS. ALL DIMENSIONS ARE TO FACE UNLESS OTHERWISE NOTED. DIMENSIONS ARE TO FACE UNLESS OTHERWISE NOTED. DIMENSIONS ARE TO FACE UNLESS OTHERWISE NOTED.